

WAFER STYLE KNIFE GATE VALVE

The WPZ model knife gate is a uni-directional wafer valve designed for general industrial service applications. The design of the body and seat assures non-clogging shutoff on suspended solids in industries such as:

- Pulp and Paper
- Wastewater treatment plants
- Food and Beverage
- Mining
- Power plants
- Chemical plants
- Bulk handling
- etc.

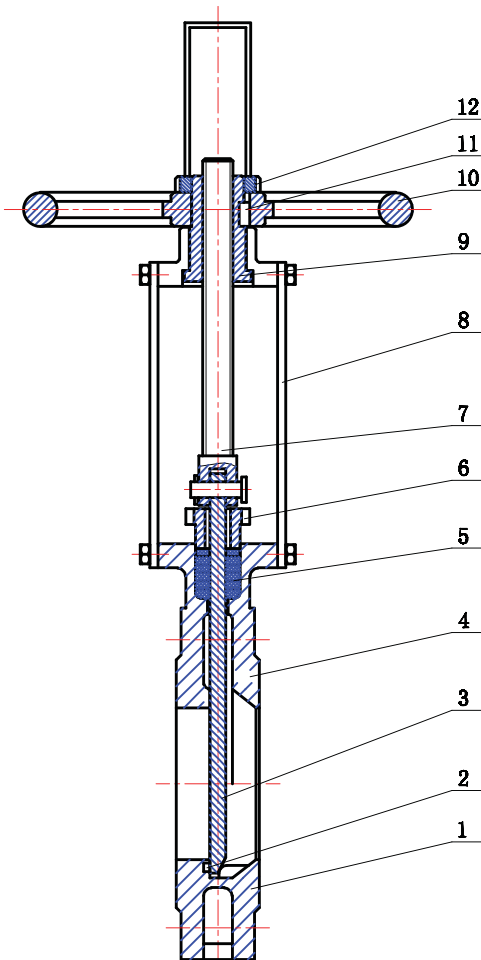
Sizes: DN 50 to DN 1200 (larger diameters on request)

Working pressure:

DN 50 to DN 250	: 10 (kg/cm ²)
DN 300 to DN 400	: 6 (kg/cm ²)
DN 450	: 5 (kg/cm ²)
DN 500 to DN 600	: 4 (kg/cm ²)
DN 700 to DN 1200	: 2 (kg/cm ²)

Standard flange connection: DIN PN 10 and ANSI B16.5 (class 150)

Note: other flange connections are available on request such as: JIS 10 K



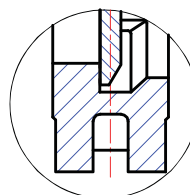
Technical Requirements

1. Design & manufacture conforms to MSS SP-81
2. Test & Inspect conform to MSS SP-81;
3. Face to Face dimensions conforms to DIN3202;
4. Flange dimensions conform to DIN2543

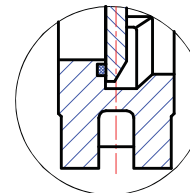
Material list

Part:	Cast Iron:	Stainless Steel:
1- Body	A216 WCB	CF8M
2- Seat	Metal or Soft seal	
3- Disc	CF8	CF8M
4- Bolt	A193 B7	2Cr13
5- Packing	PTFE	
6- Gland	A216 WCB	CF8M
7- Stem	2Cr13	
8- Yoke	A216 WCB	
9- Yoke Nut	Bronze	
10- Handwheel	HT250	
11- Key	Steel	
12- Lock Nut	1035	

SEAT TYPES



- METAL/METAL**
- High temperature
 - High density media
 - Positive shut off
 - Temp > 250°C



- SOFT SEAL**
- Standard resilient seat
 - Replaceable seat retainer ring
 - Zero leak
 - NBR Temp < 80°C
 - VITON Temp < 180°C
 - PTFE Temp < 200°C

Leakage: Stainless steel Hard seal: Grade D (Liquid 0.1 x DN mm³/s)
Soft seal Not leakage

THROUGH CONDUIT KNIFE GATE VALVE

The SCZ model knife gate is a wafer valve designed for handling difficult applications. This valve is suitable for use in recycle applications, like junk or sand traps of pulpers, high consistency cleaners,... or as silo outlet with solid material. The two piece body with round inlet and square outlet (larger than the inlet) assures non-jamming.

- Pulp and Paper
- Wastewater treatment plants
- Food and Beverage
- Mining
- Power plants
- Chemical plants
- Bulk handling
- etc.

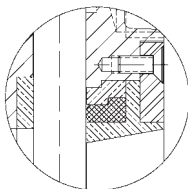
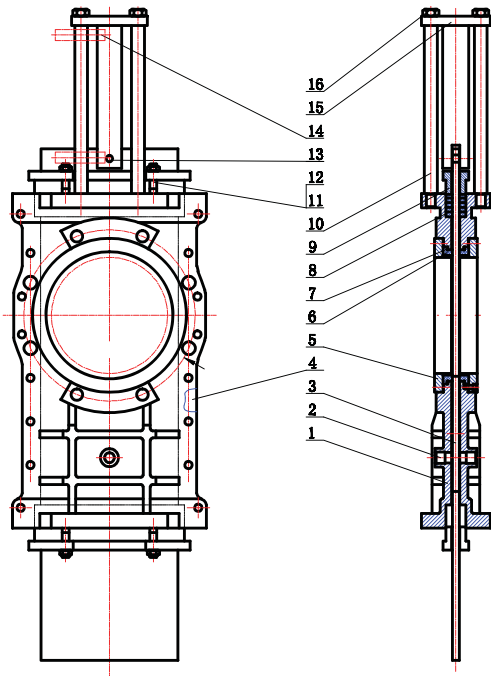
Sizes: DN 100 to DN 1200 (larger diameters on request)

Working pressure: DN 100 to DN 600: 10 (kg/cm²)

Standard flange connection: DIN PN 10 and ANSI B16.5 (class 150)

Technical Requirements

1. Design & manufacture conforms to MSS SP-81;
2. Test & Inspect conform to MSS SP-81;
3. Face to Face dimensions conforms to DIN3202;
4. Flange dimensions conform to DIN2543



Material list

Part:	Cast Iron:	Stainless Steel:
1- Body	A216 WCB	CF8M
2- Bolt	A193 B7	2Cr13
3- Disc	CF8	CF8M
4- Gasket	PTFE	
5- Ring	A216 WCB	CF8M
6- Seat	Metal or Soft seal	
7- O' ring	Viton	
8- Packing	PTFE	
9- Gland	A216 WCB	CF8M
10- Yoke	A216 WCB	
11- Bolt	A193 B7	2Cr13
12- Lock Nut	2H	
13- Pin	1035	
14- Limit switch	Proximity or Mechanic	
15- Linker	Steel	
16- Nut	B7	
17- Actator	Handwheel / Pneumatic / Electric	

SEAT / SEAL

Material	Max.Temp.(°C)	Applications
EPDM (E)	120	Acids and non mineral oils.
Nitrile (N)	120	Resistance to petroleum products.
Viton (V)	200	General chemical service. High temperature.
PTFE (T)	250	Corrosion resistance